



PRODUCT

CATALOG





We're here to help

Contact our support team for all your liquid applied roofing questions and needs.

- Product information
- System Specifications
- Warranties
- Technical resources
- Certification
- Find your rep

Phone

Call [+1 \(844\) 506-2682](tel:+18445062682) for information about orders, contractor support, warranties, guarantees, claims, technical assistance or other needs.

Ask us questions

Tell us about your inquiry and we will help you shortly, email us at info@mantarroof.com if you have any questions.





Where to find us

Manta Roofing proudly operates offices in both Florida and California to better serve our clients across the nation. For inquiries in Florida, please contact us at +1 844 506 2682. In California, reach us at +1 844 506 2682. For general inquiries, feel free to email us at info@mantaroorf.com, and our team will be happy to assist you.

California



- [+1 \(844\) 506-2682](tel:+18445062682)
- info@mantaroorf.com
- mantaroorf.com

Florida



- [+1 \(844\) 506-2682](tel:+18445062682)
- info@mantaroorf.com
- mantaroorf.com



SILICONE

PRODUCT LINE



SILICONE PRODUCTS

About Silicone Coating



Manta's roofing solutions feature a tiered system: MantaSil 430, used as a liquid applied roof restoration system (LARR), is a high-solids, single-component silicone coating for durable, long-term protection against weather extremes, utilizing Advanced Bond Technology for rapid curing; MantaFlash 330 is a premium silicone sealant for sealing leaks and repairs on diverse roof materials; and MantaMax 335 is a fiber-reinforced mastic designed for underwater or wet repairs, with all three products working synergistically to restore and maintain roof integrity.



MantaSil 430 Premium Silicone

5G / 55G

Mantasil 430 High Solids Premium Silicone Roof Coating stands out with its unique features. It is a single-component, silicone-based coating that can be applied directly to roof substrates.

Features

- Highly Reflective cooling of the building
- Temperature ranges from 35 °F to 120 °F (2 °C to 49 °C)
- Ponding water resistant
- VOC compliant – solvent-free, Mold and mildew resistant
- Advanced Bonding with roof substrates as it cures
- Excellent adhesion and flexibility
- Applied by spray, roller, or brush.
- Pail of 5G and 55G



MantaMax 335 Repair Patch

2G

MantaMax 335 Silicone Repair Patch is a versatile, fiber-reinforced silicone mastic designed for permanent, direct-bond repairs on various roof surfaces. Its flashing grade formula ensures long-lasting durability even in harsh weather conditions.

Features

- Stand-alone solution: No need for primers or top coats.
- Versatile Applications: Repairs punctures, cracks, fish mouths, and roof details
- Emergency Repairs: Can be used in wet or underwater conditions.
- Weather Resistant: UV-stable, resists chalking, cracking, and peeling
- High-Performance: Provides a durable and long-lasting repair.



MantaFlash 330 Roof Patch

2G

MantaFlash 330 Silicone Butter Grade Roof Patch is a premium-grade sealant designed for professional roofing applications. It effectively seals leaks, repairs damage, and creates a durable barrier on any roof surface.

Features

- Versatile Applications: Seals seams, fasteners, penetrations, and surface damage.
- Durable and Weather Resistant: Forms a long-lasting, breathable, and water-resistant barrier that resists UV degradation.
- Compatibility: Ideal for use before applying Manta 450 High Solids Silicone Coating.
- Ideal for Roofing repairs and maintenance, sealing leaks and preventing further damage, and creating a protective layer on various roof surfaces



ACRYLIC

PRODUCT LINE



ACRYLIC PRODUCTS

About Acrylic Coating

MantaCryl products offer flexible, high-performance roofing solutions. MantaCryl Alpine White 410 provides durability in extreme climates, while MantaCryl Bright White 405HS reflects UV rays for energy efficiency. MantaCryl White Diamond 415 offers architectural-grade performance and a bright white finish. MantaStic 318 Hybrid Roof Patch combines waterproofing and flexibility, perfect for use with elastomeric coatings.



MantaCryl 415 White Diamond 5G / 55G / 275G

MantaCryl White Diamond 415 is a premium, architectural-grade elastomeric coating formulated for exceptional performance and energy efficiency.

Features

- Dazzling Whiteness: MantAcrylic Diamond White 415 reflects sunlight and UV rays for a cooler roof and building, reducing energy consumption and cooling costs.
- Superior Durability: Resists cracking, peeling, and harsh weather conditions, providing long-lasting protection for your property
- Extended Roof Life: Protects roofs from heat damage and thermal shock, promoting longevity and reducing maintenance needs.
- Enhanced Water Resistance: Offers additional protection in areas with high moisture exposure.
- Flexible Properties: Expands and contracts with building movement for a lasting, watertight seal.



MantaCryl 410 Alpine White 5G / 55G / 275G

MantaCryl Alpine White 410 is a premium, high-performance, white acrylic roof coating designed for extreme heat and cold climates.

Features

- Energy Efficiency: Reflects sunlight and UV rays to reduce cooling costs and interior temperatures.
- Superior Protection: Forms a seamless shield that resists cracking, peeling, and mildew growth.
- Climate Resistant: Withstands extreme heat and cold for yearround performance.
- Highly Flexible: Expands and contracts with roof movement to prevent damage.
- Easy Application: Can be applied by roller or spray for efficient coverage.



MantaCryl 405HS Bright White 5G / 55G / 275G

MantAcrylic Bright White 405 High Solids is a premium, elastomeric roof coating designed for exceptional performance, energy efficiency, and a brilliant white aesthetic.

Features

- Superior Durability: Resists cracking, peeling, and harsh weather conditions, providing long-lasting protection.
- Extended Roof Life: Protects roofs from heat damage and thermal shock, promoting longevity and minimizing maintenance needs.
- Flexible Properties: Expands and contracts with building movement for a lasting, watertight seal.
- CRRC, Title 24 Approved





PRIMER

PRODUCT LINE



PRIMER PRODUCTS

About Primers

Manta primers offer reliable adhesion and preparation for various roofing and wall applications. MantaPrime Multipurpose Primer 230 is a water-based formula designed for TPO, concrete, and metal surfaces, ensuring excellent adhesion and saturation. MantaPrime Bleed Blocker 230 provides similar versatility, blocking stains and ensuring a smooth surface for coatings and further applications.



MantaPrime 230 Bleed Blocker

5G / 55G / 275G

MantaPrime Bleed Blocker 230 is a versatile, water-based primer ideal for various roofing and wall applications. Its polymer emulsion formula offers excellent adhesion and saturation properties.

Features

- Highly Reflective cooling of the building
- Temperature ranges from 35 °F to 120 °F (2 °C to 49 °C)
- Ponding water resistant
- VOC compliant – solvent-free, Mold and mildew resistant
- Advanced Bonding with roof substrates as it cures
- Excellent adhesion and flexibility
- Applied by spray, roller, or brush.
- Pail of 5G and 55G



MantaPrime 235 Multipurpose Primer

5G / 55G / 275G

MantaPrime Multipurpose Primer 235 is a versatile, water-based primer ideal for various roofing and wall applications. Its polymer The emulsion formula offers excellent adhesion and saturation properties, making it suitable for priming multiple surfaces, including TPO, Concrete, and Metal.

Features

- Adhesion Promotion: Ensures a strong bond between primer and topcoat
- Universal Compatibility: Suitable for both acrylic and silicone topcoats
- Rust Inhibition: Protects metal surfaces from corrosion
- Fast Drying: Reduces application time and improves efficiency.
- Low VOC: Environmentally friendly formula.
- Easy Application: Can be sprayed, rolled, or brushed



SPF (Foam)

PRODUCT LINE



SPF PRODUCT LINE

About SPF (Foam)

MantaSPF INSTA-SHIELD 250 A-B is a closed-cell, spray-applied polyurethane roofing foam. It creates a monolithic, water-resistant barrier that stops air infiltration and provides excellent insulation. An IS250 roofing system is self-flashing and leak-resistant without mechanical Fasteners or seams. INSTA-SHIELD 250-2.8 is a low global warming potential (Low GWP) product.

MantaSPF Insta-Shield 250 A-B

55G

MantaSPF INSTA-SHIELD 250 A-B is a closed-cell, spray-applied polyurethane roofing foam. It creates a monolithic, water-resistant barrier that stops air infiltration and provides excellent insulation. The INSTA-SHIELD roofing system is self-flashing and leak-resistant without mechanical Fasteners or seams. INSTA-SHIELD 250-2.8 is a low global warming potential (Low GWP) product.

Features

- Versatile Applications: Seals seams, fasteners, penetrations, and surface damage.
- Durable and Weather Resistant: Forms a long-lasting, breathable, and water-resistant barrier that resists UV degradation.
- Compatibility: Ideal for use before applying Manta 450 High Solids Silicone Coating.
- Ideal for Roofing repairs and maintenance, sealing leaks and preventing further damage, and creating a protective layer on various roof surfaces





SEALANT

PRODUCT LINE



SEALANT PRODUCTS

About Sealant

Manta sealants provide superior protection and durability for various roofing applications. MantaMax 335 is a high-solids, non-solvent, fiber-reinforced, flashing-grade silicone mastic designed for permanent repairs and long-lasting protection. MantaFlash 330 is a premium-grade sealant that effectively seals leaks and creates durable barriers on roof surfaces, including metal and concrete. Mantastic 318 is a hybrid formula that offers waterproofing and flexibility, ideal for use with elastomeric coatings and interior and exterior applications.



MantaMax 335 Repair Patch

2G

MantaMax 335 Silicone Repair Patch is a high-solids, non-solvent, fiber-reinforced silicone mastic designed for permanent, direct-bond repairs on various roof surfaces. Its flashing grade formula ensures long-lasting durability even in harsh weather conditions.

Features

- Stand-alone solution: No need for primers or top coats.
- Versatile Applications: Repairs punctures, cracks, fish mouths, and roof details
- Emergency Repairs: Can be used in wet or underwater conditions.
- Weather Resistant: UV-stable, resists chalking, cracking, and peeling
- High-Performance: Provides a durable and long-lasting repair.



MantaMax 330 Roof Patch

2G

MantaFlash 330 Silicone Butter Grade Roof Patch is a premium-grade sealant designed for professional roofing applications. It effectively seals leaks, repairs damage, and creates a durable barrier on roof surfaces, including metal, asphalt, modified bitumen, concrete, and most single-ply materials.

Features

- Versatile Applications: Seals seams, fasteners, penetrations, and surface damage.
- Durable and Weather Resistant: Forms a long-lasting, breathable, and water-resistant barrier that resists UV degradation.
- Compatibility: Ideal for use before applying Manta 450 High Solids Silicone Coating.
- Ideal for Roofing repairs and maintenance, sealing leaks and preventing further damage, and creating a protective layer on various roof surfaces



Mantastic 318 Hybrid Roof Patch

2G

Mantastic 318 Hybrid Roof Patch is a premium, hybrid formula for interior and exterior applications. Combining the waterproofing capabilities of polyurethane with the flexibility and ease of use of acrylic polymers, this patch is ideal for use with elastomeric roof coatings.

Features

- Versatile Application: Suitable for metal, BUR, modified bitumen, and single-ply roofing substrates.
- Superior Performance: Exceeds ASTM D1475, ASTM D2196, ASTM D2939, and TAS 139 performance requirements.
- Durable and Flexible: Offers long-lasting protection and accommodates roof movement.
- Easy to Apply: Can be applied with a paintbrush or trowel.



EMULSION

PRODUCT LINE



EMULSION PRODUCTS

About Emulsion

Manta Emulsion 216 offers a superior waterproofing and protection. Manta Roofing's 216 Emulsion is a high-performance asphaltic bentonite clay solution designed for waterproofing and surface coating. It forms a durable, flexible film that resists cracking and weathering, providing long-lasting protection. Our Acrylic Emulsion products further enhance roof durability, offering superior flexibility and UV resistance for a variety of commercial applications.



MantaEmulsion 216

5G/55G/275G

Manta Roofing Products 216 is a high-performance asphaltic bentonite clay emulsion designed for exceptional waterproofing and surface coating applications. This product forms a durable, flexible film that resists checking and cracking, ensuring long-lasting protection. Formulated with specialized soft asphalts, 216 offers enhanced weathering characteristics and superior resistance to industrial pollutants, contaminants, and corrosives.

Features

- **ENERGY EFFICIENCY:** Reflects sunlight and UV rays, reducing cooling costs and interior temperatures.
- **SUPERIOR PROTECTION:** Forms a seamless shield that resists cracking, peeling, and mildew growth.
- **CLIMATE RESISTANT:** Withstands extreme temperatures for reliable year-round performance.
- **HIGHLY FLEXIBLE:** Accommodates roof movement, preventing damage from expansion and contraction.
- **EASY APPLICATION:** Applies smoothly via roller or spray equipment for efficient coverage.

Building a Sustainable future

At Manta Roofing Products, we specialize in high-performance liquid-applied roof coatings designed to restore existing roofs, eliminating the need for costly and wasteful tear-offs. Our commitment extends beyond exceptional roofing solutions to encompass environmental stewardship. We strive to minimize our impact on the planet while helping building owners reduce their energy costs and create a more sustainable built environment.

Our name, "Manta," is inspired by the majestic manta ray. This magnificent creature, with its impressive size and global presence, embodies a sense of universal love and connection. Across oceans worldwide, people have shared unforgettable experiences swimming alongside manta rays, leaving them with a profound feeling of awe and respect. Just as the manta ray gracefully traverses the world's oceans, we aim to provide comprehensive roofing solutions that cover and protect buildings with the same dedication and care.

A new era Roofing

A Story of Innovation, Partnership, and American Quality

In the heart of the roofing industry, a new era was dawning. A company was born driven by a passion for innovation, a commitment to quality, and a deep respect for the professionals who make the industry thrive. Manta Roofing Products was more than just a name; it was a promise, a pledge to redefine the way roofing was done.

The journey began with a simple yet profound question: "How can we create a roofing product that protects buildings and empowers those who install it?" The answer was found in the collaboration between industry experts, dedicated researchers, and the professionals applying the product.

Manta Roofing Products was born from the collective wisdom of the roofing community. With over 30 years of experience in the roofing and asphaltic industry, we spent countless hours on rooftops, listening to contractors' challenges, frustrations, and aspirations. Their insights became the blueprint for our products and systems, ensuring they were functional, user-friendly, and the longevity of the systems applied.

One of the most significant challenges faced by roofing professionals is the constant evolution of roofing technology and regulations. Manta Roofing Products is not just aware of these challenges, but is determined to provide solutions that would meet the demands of the modern roofing industry. Our research and development team worked tirelessly to create products that were not only durable and protective but also compliant with the latest industry standards, ensuring you are always prepared for the future.

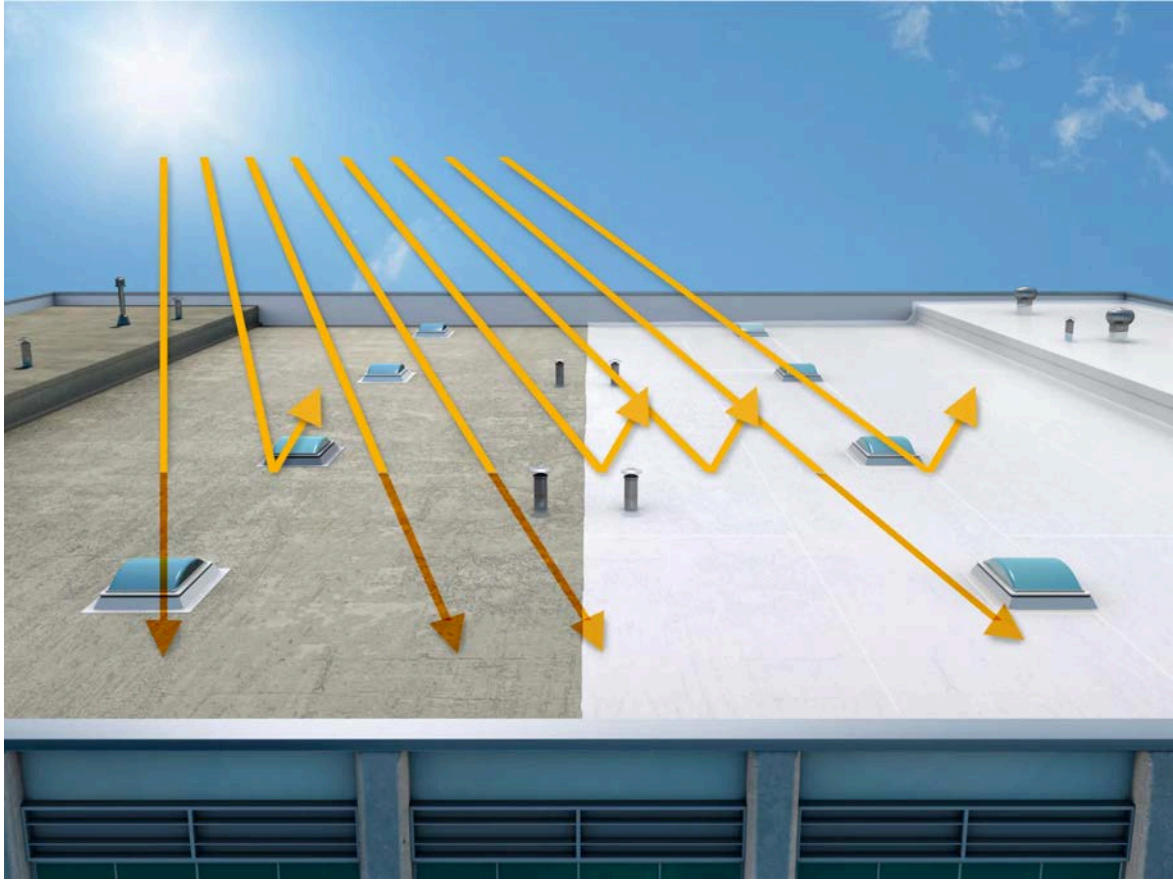
The name "Manta" was chosen for its dual meaning: a powerful, graceful creature known for its vast coverage and a Spanish word for "blanket." This reflected our commitment to providing comprehensive and protective roofing solutions. At the core of Manta Roofing Products is a deep-rooted belief in the value of American-made products. We source only the finest materials from within the United States, supporting local economies and ensuring the highest quality standards. Our unwavering commitment to quality is a testament to American ingenuity and craftsmanship, providing you with products you can trust.

But Manta Roofing Products is more than just a supplier of roofing materials. We're a partner, a collaborator, and a trusted advisor. We understand roofing professionals' unique challenges and are committed to providing the support and resources they need to succeed.

Our mission is to foster a sense of trust and partnership within the roofing industry. We believe that working together can elevate roofing standards and create a brighter future for the industry. Manta Roofing Products is a new era in roofing, defined by innovation, quality, and a commitment to partnership. We're proud to be a part of this exciting industry and look forward to continuing to serve the roofing community for years to come.



The **Energy-Saving Benefits** of Highly Reflective Manta Roof Coatings



- **Reduced Cooling Costs:** Reflecting a significant portion of solar radiation minimizes heat absorption, leading to lower interior temperatures. This reduces reliance on air conditioning systems, resulting in substantial energy savings.
- **Lower Peak Demand:** Reducing the demand for air conditioning during peak hours can help alleviate stress on the electrical grid and potentially lower your energy bills further.
- **Extended Roof Lifespan:** UV radiation can degrade roofing materials over time. Our reflective coatings act as a protective barrier, shielding your roof from harmful UV rays and extending its lifespan.
- **Improved Building Comfort:** A more fabulous roof translates to a more comfortable indoor environment, enhancing the well-being of occupants.
- **Environmental Benefits:** Reduced energy consumption leads to a smaller carbon footprint, contributing to a more sustainable environment.
- **Mitigation of the Urban Heat Island Effect:** In urban areas, dark roofs contribute to the "heat island effect," raising ambient temperatures. Reflective roofs help mitigate this effect.

Case Study With Coastal Roofing

This case study examines a classic example of the benefits of applying a roof restoration system instead of a complete tear-off. It highlights the economic and sustainable advantages of this approach, focusing on the successful application of the MantaSil 430 silicone coating system by Coastal Roofing.

The Challenge

The owner of a commercial building faced a predicament. His insurance company, noticing the deteriorating condition of the roof and recent leaks, demanded upgrades, including a new sprinkler system. The building owner, already facing the costs of these upgrades, was on a tight budget. A complete roof replacement loomed as a potentially overwhelming expense.

Seeking a cost-effective solution, the building owner contacted Coastal Roofing, a reputable firm known for its expertise in roof restoration. Sean Campbell, Sr. Project Manager, and Andy Whitham, owner of Coastal Roofing, assessed the situation and recommended a roof restoration system using MantaSil 430, a high-solids premium silicone coating. This approach offered a compelling combination of cost savings and long-term performance, all backed by a 15-year materials warranty.

The Benefits of MantaSil 430 Silicone System

This case study highlights several key benefits of the MantaSil 430 silicone roof restoration system:

- **Cost-Effectiveness:** In this case, roof restoration with MantaSil 430 offered the building owner a 30% savings compared to the estimated cost of a complete roof replacement. This made it a financially viable solution that addressed the insurance company's requirements while staying within the owner's budget.
- **Sustainability:** Roof restoration with MantaSil 430 significantly reduces environmental impact. By avoiding a complete tear-off, this project diverted an estimated 1-2 tons of roofing material from landfills. Furthermore, it minimized the energy consumption and carbon emissions associated with manufacturing and transporting new roofing materials.
- **Durability:** The MantaSil 430 system provides a long-lasting, durable solution that can withstand harsh weather conditions and extend the life of the roof.
- **Energy Efficiency:** The system's high reflectivity can lower energy costs by reducing cooling loads.
- **Minimal Disruption:** Unlike a full roof replacement, roof restoration can often be completed with minimal disruption to building occupants.

The Result

The building owner was delighted with the outcome. Coastal Roofing had successfully restored his roof and met the insurance company's requirements while staying within his budget. The 15-year materials warranty provided additional peace of mind, guaranteeing long-term protection and performance.



Before and After



BEFORE & AFTER



We're here to help

Phone

Call [+1 \(844\) 506-2682](tel:+1(844)506-2682) for information about orders, contractor support, warranties, guarantees, claims, technical assistance or other needs.

Ask us questions

Tell us about your inquiry and we will help you shortly, email us at info@mantarroof.com if you have any questions.



Manta Roofing Products

1835 Wright Ave, La Verne, CA 91750
1200 Se 20Th St, Fort Lauderdale, FL 33316
info@mantarroof.com
Customer Service: (844) 506-2682

MANTAROOF.COM

©2024 Manta Roofing Products U.S.A., LLC. All rights reserved.

All information printed is accurate at the time of publication and may change at any time with or without notice.

For the most up to date information and data, please visit our website at mantarroof.com